

SIEMENS



Transducers

# ACUSON X600™ Ultrasound System

Release 1.0

# TABLE OF CONTENTS

|                       |   |                        |   |
|-----------------------|---|------------------------|---|
| CH5-2 Transducer..... | 3 | VF10-5 Transducer..... | 5 |
| C6-2 Transducer.....  | 3 | VF12-4 Transducer..... | 6 |
| C6F2 Transducer.....  | 4 | EV9F3 Transducer.....  | 6 |
| C8F3 Transducer.....  | 4 | EC9-4w Transducer..... | 7 |
| 4V1c Transducer.....  | 5 | CW5 Transducer.....    | 7 |
|                       |   | CW2 Transducer.....    | 8 |



### CH5-2 Transducer

|                             |                                                                                                                                                                                                  |
|-----------------------------|--------------------------------------------------------------------------------------------------------------------------------------------------------------------------------------------------|
| <b>Part Number:</b>         | 10790144                                                                                                                                                                                         |
| <b>Frequency Bandwidth:</b> | 1.4 – 5.0 MHz                                                                                                                                                                                    |
| <b>Compatible with:</b>     | ACUSON X300™ ultrasound system, premium edition (PE)<br>ACUSON X300™ ultrasound system<br>ACUSON X150™ ultrasound system<br>SONOLINE G60 S™ ultrasound system<br>SONOLINE G40™ ultrasound system |
| <b>Exam Types:</b>          | Abdomen, Early OB, Emergency Medicine, Fetal Echo, OB/GYN, Peripheral Vascular, Renal, Urology, Venous                                                                                           |

#### Design Attributes:

- Wide bandwidth curved array transducer
- Hanafy lens transducer technology
- User-selectable MultiHertz™ multiple frequency imaging
- Ergonomically designed form factor
- Lightweight transducer with flexible cable



### C6-2 Transducer

|                             |                                                                                                          |
|-----------------------------|----------------------------------------------------------------------------------------------------------|
| <b>Part Number:</b>         | 10790142                                                                                                 |
| <b>Frequency Bandwidth:</b> | 1.8 – 6.0 MHz                                                                                            |
| <b>Compatible with:</b>     | ACUSON X500™ ultrasound system<br>SONOLINE G60 S ultrasound system<br>ACUSON CV70™ cardiovascular system |
| <b>Exam Types:</b>          | Abdomen, Early OB, Emergency Medicine, Fetal Echo, OB/GYN, Peripheral Vascular, Renal                    |

#### Design Attributes:

- Wide bandwidth curved array transducer
- User-selectable MultiHertz imaging
- Ergonomically designed form factor
- Lightweight transducer with flexible cable
- Curved Vector Format



### C6F2 Transducer

|                             |                                                     |
|-----------------------------|-----------------------------------------------------|
| <b>Part Number:</b>         | 10789750                                            |
| <b>Frequency Bandwidth:</b> | 1.5 – 5.5 MHz                                       |
| <b>Compatible with:</b>     | ACUSON X700™ ultrasound system                      |
| <b>Exam Types:</b>          | Abdomen, Early OB, Fetal Echo, OB/GYN, Pelvic Floor |

#### Design Attributes:

- Curved Vector Format
- Wide bandwidth curved array transducer
- User-selectable MultiHertz imaging
- Ergonomically designed form factor
- Lightweight transducer with flexible cable



### C8F3 Transducer

|                             |                                                      |
|-----------------------------|------------------------------------------------------|
| <b>Part Number:</b>         | 10789749                                             |
| <b>Frequency Bandwidth:</b> | 2.0 – 7.0 MHz                                        |
| <b>Compatible with:</b>     | ACUSON X700 ultrasound system                        |
| <b>Exam Types:</b>          | Abdomen, Early OB, Fetal Echo, GYN, OB, Pelvic Floor |

#### Design Attributes:

- Curved Vector Format
- Wide bandwidth curved array transducer
- User-selectable MultiHertz imaging
- Ergonomically designed form factor
- Lightweight transducer with flexible cable



### 4V1c (DL) Transducer

|                             |                                                    |
|-----------------------------|----------------------------------------------------|
| <b>Part Number:</b>         | 10789730                                           |
| <b>Frequency Bandwidth:</b> | 1.0 – 4.0 MHz                                      |
| <b>Compatible with:</b>     | ACUSON X700 ultrasound system                      |
| <b>Exam Types:</b>          | Abdomen, Cardiac, Emergency Medicine, Transcranial |

#### Design Attributes:

- Hanafy lens transducer technology
- Sector imaging format
- User-selectable MultiHertz imaging
- RF shielding



### VF10-5 Transducer

|                             |                                                                                                                                                                                           |
|-----------------------------|-------------------------------------------------------------------------------------------------------------------------------------------------------------------------------------------|
| <b>Part Number:</b>         | 10789742                                                                                                                                                                                  |
| <b>Frequency Bandwidth:</b> | 5.0 – 10.0 MHz                                                                                                                                                                            |
| <b>Compatible with:</b>     | ACUSON X700 ultrasound system<br>ACUSON X300™ ultrasound system, premium edition (PE)<br>ACUSON X300 ultrasound system<br>ACUSON X150 ultrasound system<br>SONOLINE G40 ultrasound system |
| <b>Exam Types:</b>          | Breast, Cerebrovascular, Emergency Medicine, Musculoskeletal, Orthopedic, Peripheral Vascular, Testicle, Thyroid, Venous                                                                  |

#### Design Attributes:

- Wide bandwidth linear transducer
- Virtual format imaging
- User-selectable MultiHertz imaging
- Ergonomically designed form factor
- 2D beam steering
- Lightweight transducer with flexible cable



### VF12-4 Transducer

|                             |                                                                                                                                        |
|-----------------------------|----------------------------------------------------------------------------------------------------------------------------------------|
| <b>Part Number:</b>         | 10789742                                                                                                                               |
| <b>Frequency Bandwidth:</b> | 4.0 – 12.0 MHz                                                                                                                         |
| <b>Compatible with:</b>     | ACUSON X700 ultrasound system                                                                                                          |
| <b>Exam Types:</b>          | Breast, Cerebrovascular, Emergency Medicine, Musculoskeletal, Orthopedics, Peripheral Vascular, Small Parts, Testicle, Thyroid, Venous |

#### Design Attributes:

- Wide bandwidth long linear transducer
- Virtual format imaging
- Hanafy lens transducer technology



### EV9F3 Transducer

|                             |                               |
|-----------------------------|-------------------------------|
| <b>Part Number:</b>         | 10789751                      |
| <b>Frequency Bandwidth:</b> | 3.0 – 9.0 MHz                 |
| <b>Compatible with:</b>     | ACUSON X700 ultrasound system |
| <b>Exam Types:</b>          | Early OB, OB/GYN              |

#### Design Attributes:

- Curved Vector Format
- Wide bandwidth endovaginal volume transducer
- User-selectable MultiHertz imaging
- Lightweight transducer with flexible cable



### EC9-4w Transducer

|                             |                               |
|-----------------------------|-------------------------------|
| <b>Part Number:</b>         | 10659487                      |
| <b>Frequency Bandwidth:</b> | 4.0 – 9.0 MHz                 |
| <b>Compatible with:</b>     | ACUSON X700 ultrasound system |
| <b>Exam Types:</b>          | Early OB, OB/GYN, Urology     |

#### Design Attributes:

- Wide field of view curved array transducer
- User-selectable MultiHertz imaging
- Lightweight transducer with flexible cable
- Curved Vector Format



### CW5 Transducer

|                                           |                                                                                                                                                                                                                                                                                                                                       |
|-------------------------------------------|---------------------------------------------------------------------------------------------------------------------------------------------------------------------------------------------------------------------------------------------------------------------------------------------------------------------------------------|
| <b>Part Number:</b>                       | 10658871                                                                                                                                                                                                                                                                                                                              |
| <b>Selectable CW Doppler Frequencies:</b> | 5.0 MHz                                                                                                                                                                                                                                                                                                                               |
| <b>Compatible with:</b>                   | ACUSON S3000 ultrasound system<br>ACUSON S2000 ultrasound system<br>ACUSON S1000 ultrasound system<br>ACUSON Antares™ ultrasound system<br>ACUSON X700 ultrasound system<br>ACUSON X500 ultrasound system<br>ACUSON X300 ultrasound system, premium edition (PE)<br>ACUSON X300 ultrasound system<br>SONOLINE G60 S ultrasound system |
| <b>Exam Types:</b>                        | Cerebrovascular, Pediatric Echo                                                                                                                                                                                                                                                                                                       |



## CW2 Transducer

|                     |          |
|---------------------|----------|
| <b>Part Number:</b> | 10658912 |
|---------------------|----------|

|                                           |         |
|-------------------------------------------|---------|
| <b>Selectable CW Doppler Frequencies:</b> | 2.0 MHz |
|-------------------------------------------|---------|

|                         |                                                                                                                                                                                                                                                                                                                                      |
|-------------------------|--------------------------------------------------------------------------------------------------------------------------------------------------------------------------------------------------------------------------------------------------------------------------------------------------------------------------------------|
| <b>Compatible with:</b> | ACUSON S3000 ultrasound system<br>ACUSON S2000 ultrasound system<br>ACUSON S1000 ultrasound system<br>ACUSON Antares ultrasound system<br>ACUSON X700 ultrasound system<br>ACUSON X500 ultrasound system<br>ACUSON X300 ultrasound system, premium edition (PE)<br>ACUSON X300 ultrasound system<br>SONOLINE G60 S ultrasound system |
|-------------------------|--------------------------------------------------------------------------------------------------------------------------------------------------------------------------------------------------------------------------------------------------------------------------------------------------------------------------------------|

|                    |                            |
|--------------------|----------------------------|
| <b>Exam Types:</b> | Adult Echo, Pediatric Echo |
|--------------------|----------------------------|



The products/features mentioned in this document may not be commercially available in all countries. Due to regulatory reasons their future availability cannot be guaranteed. Please contact your local Siemens organization for further details.

Frequency Bandwidth measurements represent bandwidth at  $\pm 20$  dB.

128XP/10C, ACUSON Antares, ACUSON S1000, ACUSON S2000, ACUSON S3000, ACUSON SC2000, ACUSON X150, ACUSON X300, ACUSON X500, ACUSON X600, ACUSON X700, Aspen, CV70, Cypress, Elegra, G40, G50, G60 S, HELX, MultiHertz, SONOLINE and SwiftLink are trademarks of Siemens Medical Solutions USA, Inc.

**Global Siemens Headquarters**

Siemens AG  
Wittelsbacherplatz 2  
80333 Muenchen  
Germany

**Global Siemens Healthcare Headquarters**

Siemens AG  
Healthcare  
Henkestrasse 127  
91052 Erlangen  
Telephone: +49 9131 84-0  
Germany

[www.siemens.com/healthcare](http://www.siemens.com/healthcare)

**Legal Manufacturer**

Siemens Medical Solutions USA, Inc.  
Ultrasound  
22010 S.E. 51st Street  
Issaquah, WA 98029, USA  
Phone: 1-888-826-9702  
[siemens-healthineers.com/ultrasound](http://siemens-healthineers.com/ultrasound)

**SIEMENS**

## General Imaging

# The Best of What Matters Most: A Smart Solution for General Imaging

## ACUSON X600™ Ultrasound System

Without compromise, the ACUSON X600 ultrasound system delivers what matters most: unparalleled quality of patient care and industry leading system reliability.

Engineered on a robust system architecture and with advanced state of the art technologies migrated from our premium systems, the ACUSON X600 system sets a new standard of "standard" in imaging performance and workflow efficiencies. Giving you the freedom to grow and adapt to the clinical demands in General Imaging.



### Advanced Imaging

We believe you want to put your money where it matters most. That's why the ACUSON X600 system is built with an advanced imaging engine packed with premium technologies to give you the diagnostic confidence you need. Superb 2D imaging resulting from features like Advanced SieClear™ spatial compounding and Dynamic TCE™ tissue contrast enhancement technology provide exceptional detail and contrast resolution.



### Built to Work Smart

With thoughtful engineering to create true value, the ACUSON X600 system offers reliability, ergonomic design and efficient workflow. The system provides quick access to frequently used controls and multiple customizations of imaging presets including measurement and reporting packages. Smart productivity features like TGO™ tissue grayscale optimization technology provides one button optimization to adjust brightness and equalize overall gain for a more streamlined scanning experience.

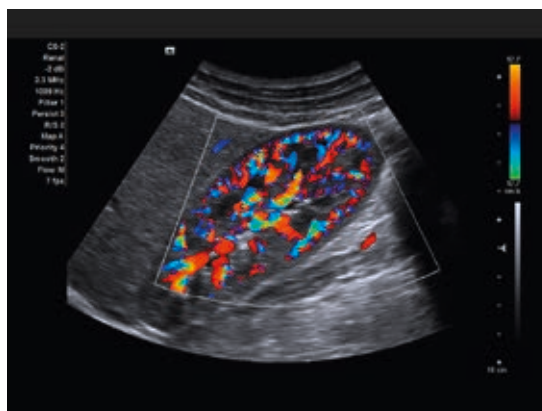
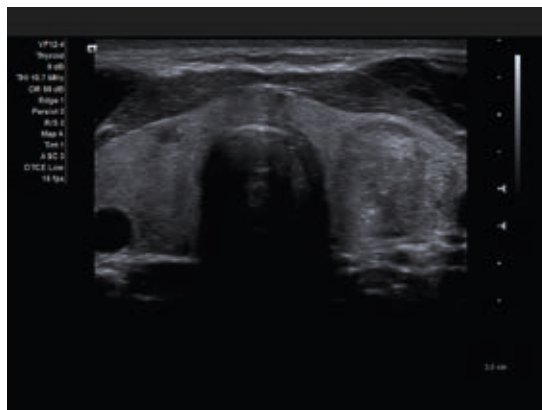
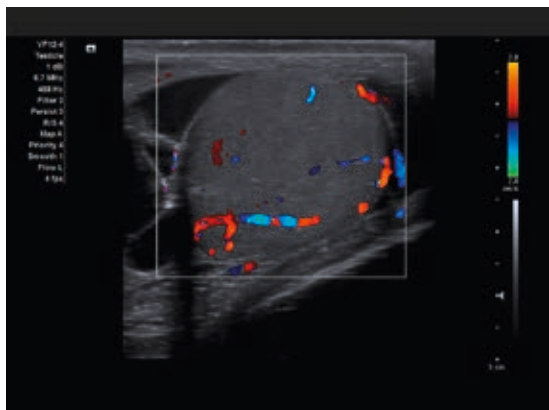
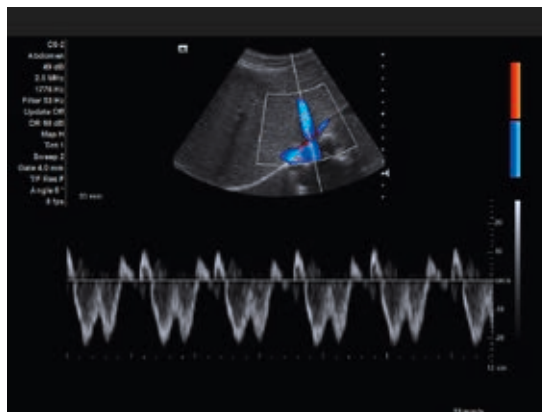


### Progress and Protection

Built on the solid foundation of proven reliability, the ACUSON X600 system delivers dependability so you can deliver the same to your patients. With low cost of ownership, it is a cost-effective core solution that can evolve and adapt with your practice.

The ACUSON X600 system gives you the freedom to choose a cost-effective, smart solution without compromises.

**Answers for life.**



ACUSON X600, Advanced SieClear, Dynamic TCE, and TGO are trademarks of is a trademark of Siemens Medical Solutions USA, Inc.

The background of the advertisement is a Siemens ACUSON X600 Ultrasound System. The monitor displays the 'ACUSON X FAMILY' logo in a glowing blue font, with 'Ultrasound Systems' written below it. The top of the monitor frame has the 'SIEMENS' logo, and the top right corner of the frame is labeled 'ACUSON X600'. A keyboard is partially visible at the bottom left.

**SIEMENS**

An affordable  
ultrasound  
system powered  
by heavyweight  
imaging technology

**It punches above its price class.**

**ACUSON X600 Ultrasound System**

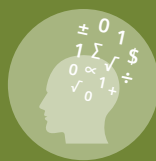
[www.siemens.com/X600](http://www.siemens.com/X600)

**Answers for life.**

# The new standard of “standard”.



Advanced Imaging



Built to Work Smart



Progress and Protection

## Get the best of what matters most with the ACUSON X600 ultrasound system

When it comes to ultrasound systems, we believe some things – such as image quality and reliability – should not be compromised. That’s why we engineered the ACUSON X600™ ultrasound system around an advanced imaging engine that excels in the shared-service environment. It allows you to put your money where it matters most, leveraging a wide range of sophisticated applications for an affordable, day-to-day imaging experience that’s anything but standard.

# ACUSON X600



# ACUSON X600 Ultrasound System

The best of what matters most.

20" LED monitor  
with integrated  
ergonomic handle

180° articulating arm

Customizable presets,  
measurements, and  
report packages

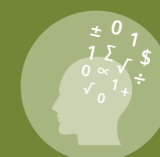
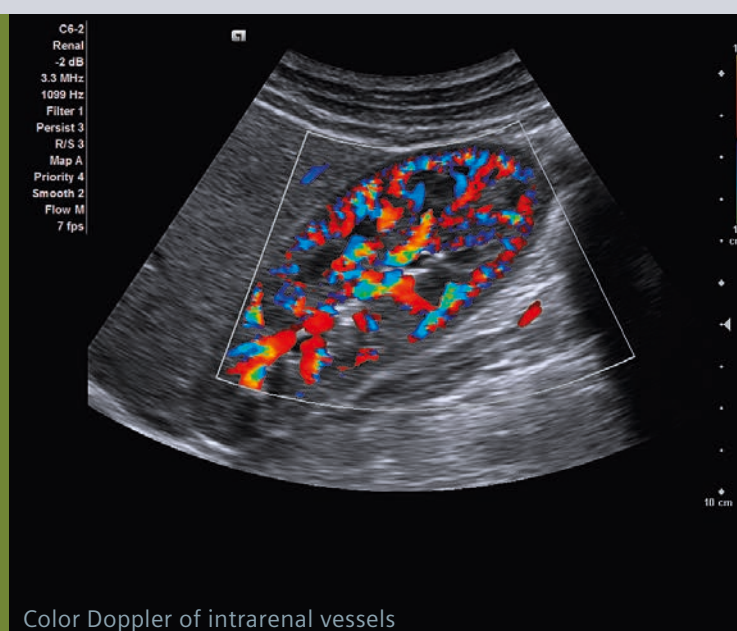
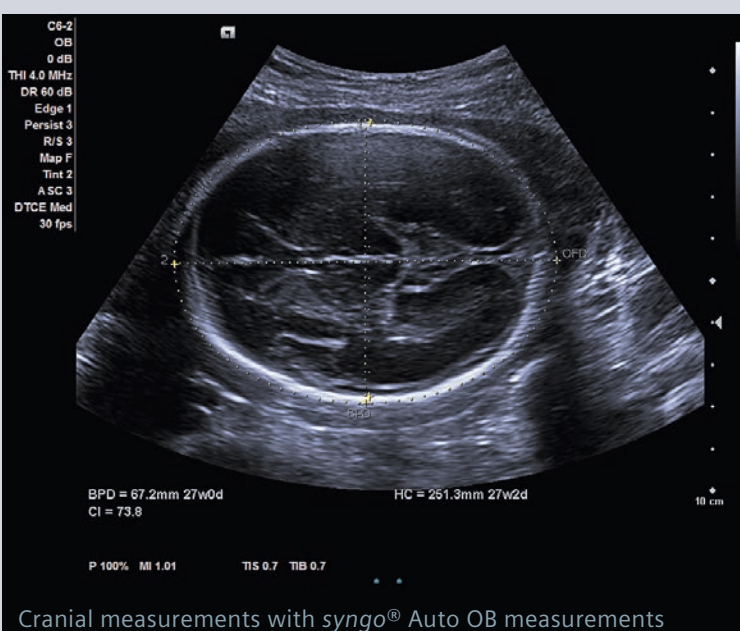
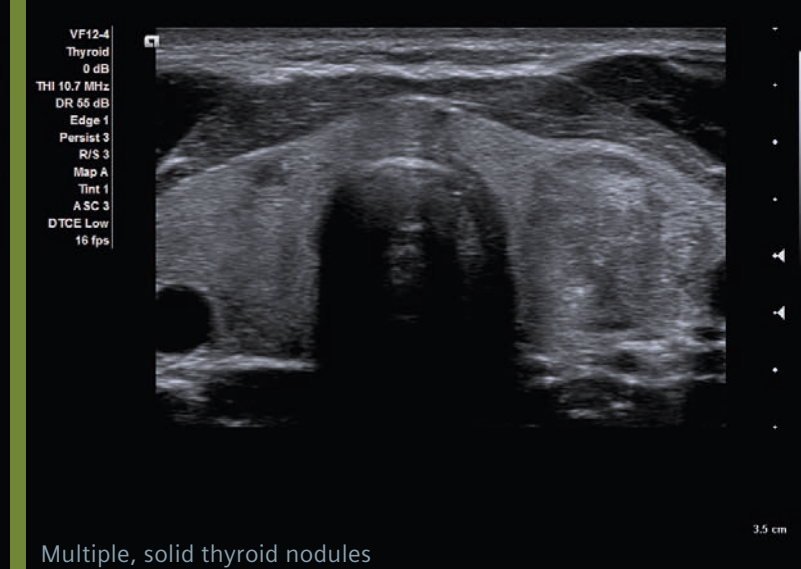
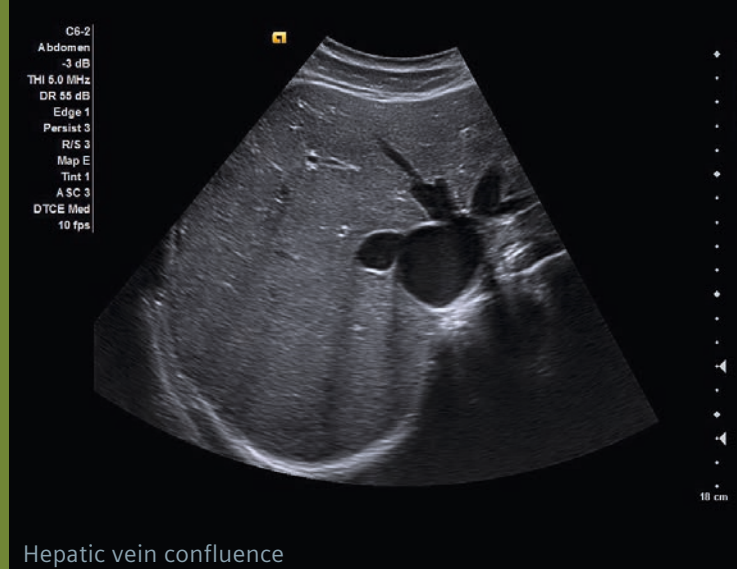
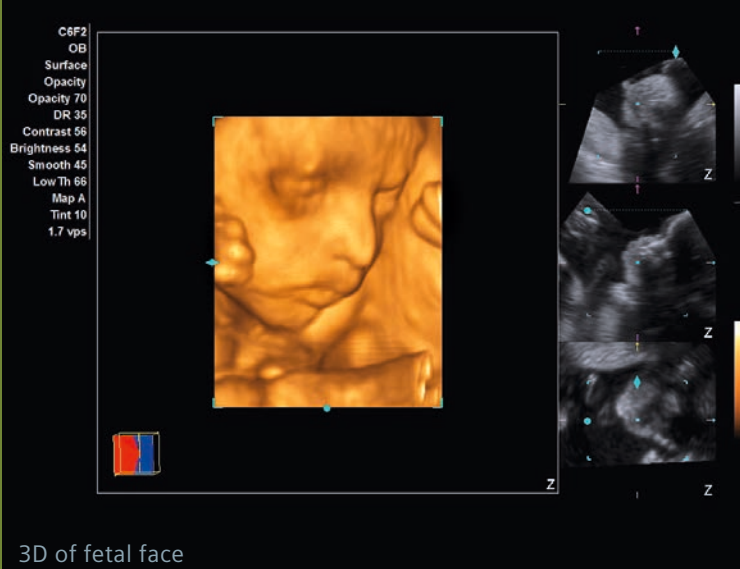
One-touch image  
optimization

Premium features  
made standard



## Advanced Imaging

The ACUSON X600™ ultrasound system provides heavyweight performance in an agile, light-weight package. It's founded on an advanced imaging engine typically reserved for higher-end systems so you can power your practice with insights based on clear, uniform images.



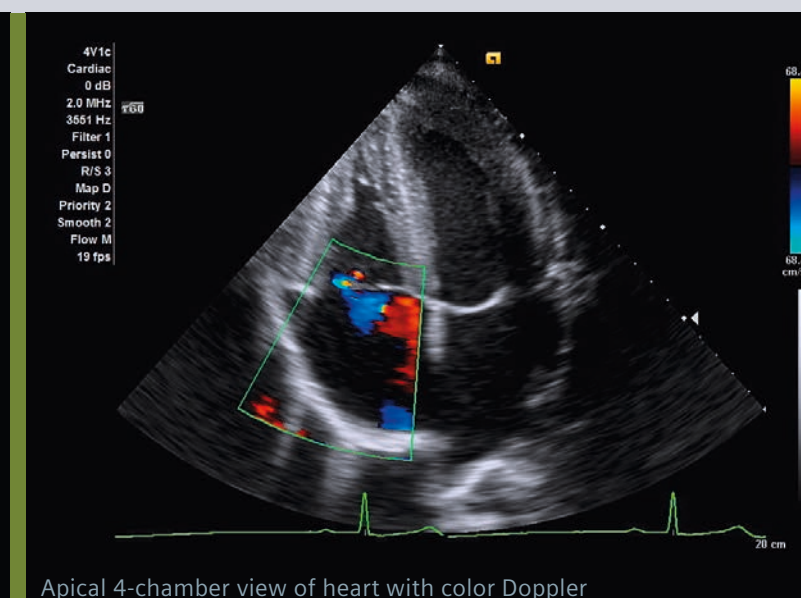
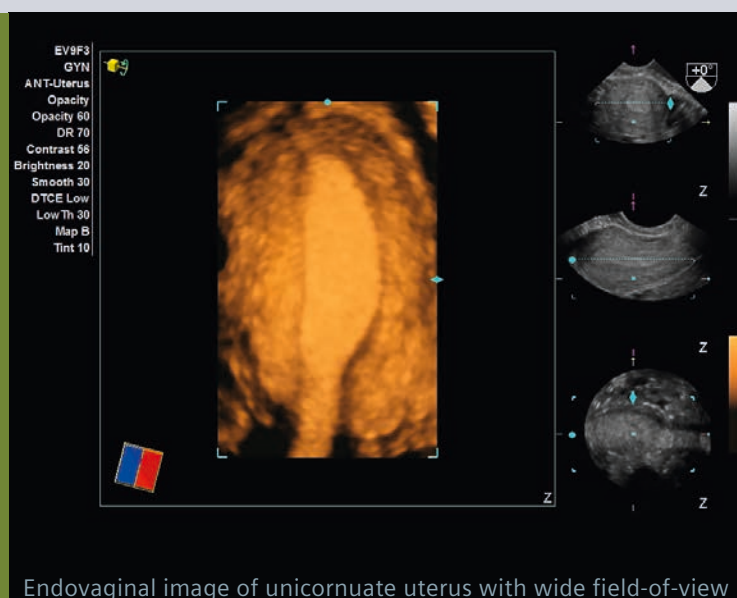
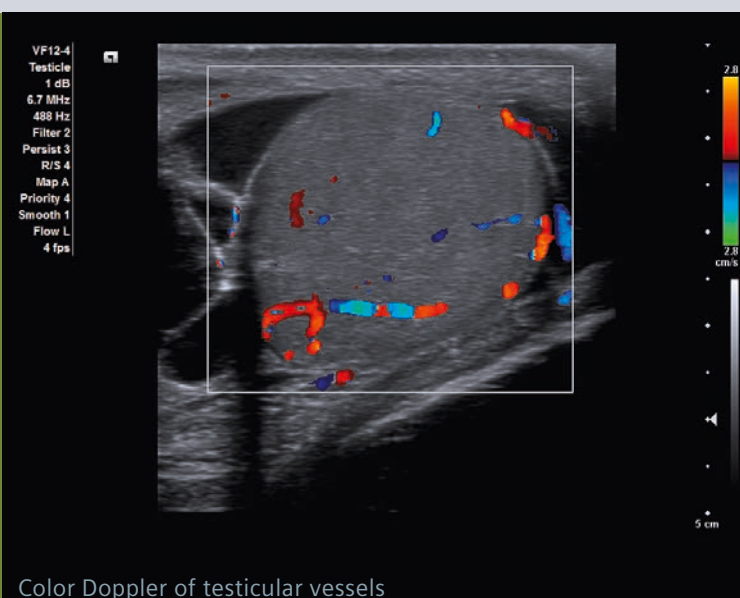
## Built to Work Smart

With knowledge-based workflow tools for increased exam speed and consistency, the ACUSON X600 system is engineered for efficiency. It leverages features such as automatic tissue grayscale optimization, wireless data transfer, and available QuikStart rapid boot to streamline operation across daily, shared-service imaging.



## Progress and Protection

The ACUSON X600 system continually benefits from technologies pioneered on higher-end systems. With advanced features for a wide variety of applications, it has the versatility to meet your needs today as well as the flexibility to grow with your evolving clinical demands.



Standalone clinical images may have been cropped to better visualize pathology.

ACUSON X600 is a trademark of Siemens Medical Solutions USA, Inc. and *syngo* is a trademark of Siemens AG

**Global Siemens Headquarters**

Siemens AG  
Wittelsbacherplatz 2  
80333 Muenchen  
Germany

**Global Siemens  
Healthcare Headquarters**

Siemens AG  
Healthcare  
Henkestraße 127  
91052 Erlangen  
Germany  
Phone: +49 9131 84-0  
[www.siemens.com/healthcare](http://www.siemens.com/healthcare)

**Legal Manufacturer**

Siemens Medical Solutions USA, Inc.  
Ultrasound  
22010 S.E. 51st Street  
Issaquah, WA 98029, USA  
Phone: 1-888-826-9702  
[siemens-healthineers.com/ultrasound](http://siemens-healthineers.com/ultrasound)





OB/GYN

# The Best of What Matters Most: A Smart Solution for OB/GYN

ACUSON X600 Ultrasound System

Without compromise, the ACUSON X600™ ultrasound system delivers what matters most: unparalleled quality of patient care and industry leading system reliability.

Engineered on a robust system architecture and with advanced state of the art technologies migrated from our premium system, the ACUSON X600 system sets a new standard of “standard” in imaging performance and workflow efficiencies, giving you the freedom to grow and adapt to the clinical demands in OB/GYN.



## Advanced Imaging

Superb 2D imaging resulting from features like Advanced SieClear™ spatial compounding and Dynamic TCE™ tissue contrast enhancement technology optimized for OB/GYN provide exceptional detail and contrast resolution. With three new volume transducers and new workflow, the ACUSON X600 system provides enhanced 3D/4D image quality for clear visualization of complex fetal and maternal anatomy.



## Built to Work Smart

With thoughtful engineering to create true value, the ACUSON X600 system offers reliability, ergonomic design and efficient workflow. The system provides quick access to frequently used controls and multiple customizations of imaging presets including measurement and reporting packages. Smart productivity features like syngo® Auto OB measurements simplify fetal biometrics measurements, saving up to 75% of key strokes\* and providing consistency in data measurements.



## Progress and Protection

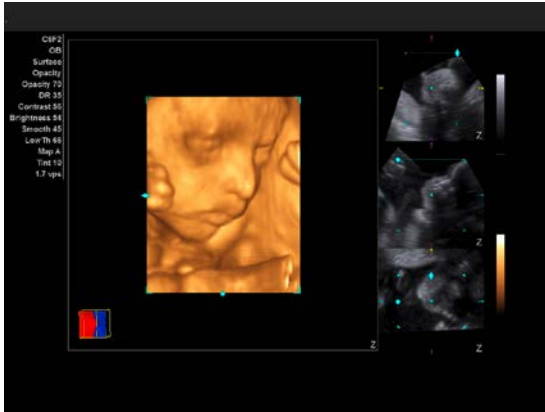
Built on the solid foundation of proven reliability, the ACUSON X600 system delivers dependability so you can deliver the same to your patients. With low cost of ownership, it is a cost-effective core solution that can evolve and adapt with your OB/GYN practice.

\*Data on file

The ACUSON X600 system gives you the freedom to choose a cost-effective, smart solution without compromises.

Answers for life.





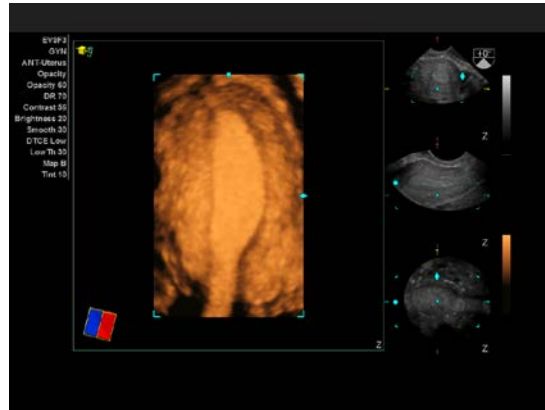
**Left:**  
4D of fetal face



**Right:**  
Ovarian cyst with color Doppler of ovarian vasculature



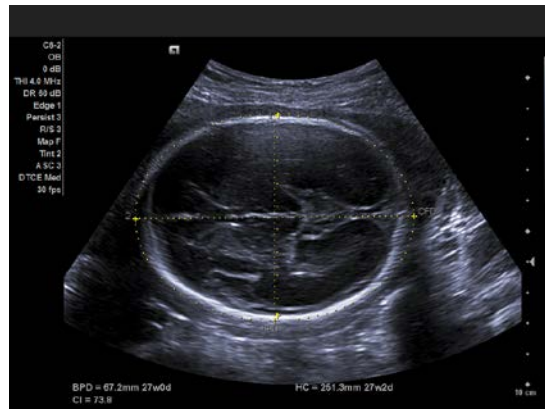
**Left:**  
Endovaginal image of uterus with wide field-of-view



**Right:**  
3D of unicornuate uterus and endometrium



**Left:**  
Fetal profile



**Right:**  
Fetal head circumference with syngo® Auto OB measurements

Standalone images may have been cropped to better visualize pathology.

ACUSON X600 is a trademark of Siemens Medical Solutions USA, Inc., and syngo is a trademark of Siemens AG.

**Global Siemens Headquarters**  
Siemens AG  
Wittelsbacherplatz 2  
80333 Muenchen  
Germany

**Global Siemens Healthcare Headquarters**  
Siemens AG  
Healthcare  
Henkestraße 127  
91052 Erlangen  
Germany  
Phone: +49 9131 84-0

**Legal Manufacturer**  
Siemens Medical Solutions USA, Inc.  
Ultrasound  
22010 S.E. 51st Street  
Issaquah, WA 98029, USA  
Phone: 1-888-826-9702  
siemens-healthineers.com/ultrasound

Order No. A91US-301-1C-4A00 | Printed in Germany | CC US 2709 1114 | © 11.2014, Siemens Medical Solutions USA, Inc.